

GX™

The Essential Painting Tool
for Professionals



PROFESSIONAL ADVANTAGES

- Ideal for painting in renovation and new home construction projects
- Finish every job, every day thanks to the ProXChange™ fast pump replacement system
- Compact, lightweight and easy to use



The Essential Painting Tool for Professionals

With the GX™ line of Airless Sprayers, Graco allows professionals to reap the **benefits of AIRLESS Painting:**

- **SPEED AND EFFICIENCY:**
finish your jobs faster
- **UNIFORM APPLICATION:**
apply an even layer of paint on every surface
- **BETTER FINISH:**
does not leave streaks like with a roller or a brush
- **EASY HANDLING:**
take your sprayer with you wherever you go

Maybe you have not yet had the opportunity to experience the benefits of spraying Airless first hand? Then here is your chance!

"A true Airless for professionals has never been this affordable."

If ever you had any reservations about switching from your brush and roller to Airless equipment, we have now made the decision easier! Because of its innovative design, Graco's GX™ line lets you take your first step into Airless spray equipment, with a limited investment.

Are you an Airless painter? You already know you can finish more jobs quicker, with a better finish... What we CAN tell you is that with Graco's GX™ line you will now be able to transfer these benefits to even more jobs!

Why just stick to Airless painting for exterior jobs, or bigger commercial projects? Why not use Airless for interior renovation jobs as well? Start now with the GX™ Airless paint sprayers that are:

- still the professional equipment you're used to working with, but in a more compact and easier to carry version
- designed to offer their benefits at an all time low investment
- ideal to spray your second colour and increase your productivity on small job sites



ProX™ Power-Piston Pump

- Exceptional durability and long life piston pump
- Exclusive, lifetime lubricated wiper pad for maintenance-free operation
- Modular pump components for easy maintenance

Flexible Clear Tubing

Easy to use and clean. Spray water or solvent-based paints directly from containers from 1 - 30 litres.



Convenient Drip Cup

Eliminates the risk of paint drips.



Professional SG3™ Gun
with RAC X™ tip, 15 m hose

Direct Immersion Design

Draws paint directly from paint buckets.



Extreme Portability

Easily carry your sprayer around with you

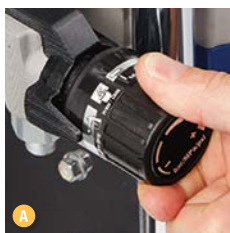




Hopper (5.7 litre) – Toolless removal

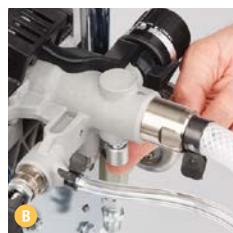
- Ideal for small amounts of material
- Lid included for spill-proof portability

Professional FTx™-E Gun
with RAC X™ tip, 7.5 m hose



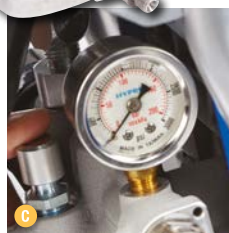
Adjustable Pressure Control

Allows you to spray or roll a wide range of coatings.



PushPrime™

Assures fast priming every time — loosens stuck inlet check valves in case of priming issues.



Pressure Gauge

Professional oil-filled pressure gauge

Transform your GX unit into the optimal renovation painting tool

JetRoller™

Extend your sprayer

Use your preferred roller and combine rolling & spraying into one operation. Extend your sprayer with the JetRoller and minimize application time when combining rolling and spraying into one operation.

Benefits:

- Uses commonly available 18 or 25 cm roller covers.
- Completes large jobs in half the time of traditional methods
- Reduces overspray
- Eliminates reaching
- Eliminates climbing and continually reaching up and down

Kit includes a lightweight detachable roller frame, 50 cm extension, CleanShot™ Shut-Off™ valve, Inline™ gun, spray tip and guard.

ProXChange™ Pump Replacement System

The Easy & Fast Pump Repair System

In four simple steps, you can remove and replace the pump cartridge:

- No tools needed to remove pump
- Simply lift door to remove pump



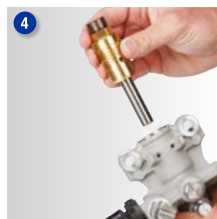
Slide & lift open access door



Remove pump section



Use frame hex fitting to loosen pump and remove cartridge



Install new cartridge and replace pump

PROXCHANGE



! TIP

Replacement Pump
Avoid downtime by keeping a spare replacement pump to hand !



The Essential Painting Tool for Professionals

Technical Specifications

All units ship complete and ready to spray:

Model Name:	GX™ FF	GX™ 21
Part Numbers: for EURO Version (230 V)	CEE VDO cord / 17G184	CEE VDO cord / 17G183
for Multicord Version (230 V)	Multi x4: IT-CH-DK-UK / 17H222	Multi x4: IT-CH-DK-UK / 17H218
Max. Working Pressure - bar	207 bar	207 bar
Max. Tip Size - 1 Gun	0.019"	0.021"
Max. Fluid Flow - lpm / (gpm)	1.5 / (0.38)	1.8 / (0.47)
Frame Design	Hopper Stand	DI Stand
Suction System	5.7 litre Hopper, solvent resistant	White, solvent resistant
InstaClean™ Pump Filter	None	40 mesh
Hose	3/16" x 7.5 m BlueMax™ II	1/4" x 15 m Duraflex™
Gun / Guard / Tip	FTx™-E / RAC X™ / FFA210	SG3™ / RAC X™ / PAA515
Gun Filter	100 mesh	60 mesh
Gun Style	2-Finger	4-Finger

Accessories

Get the most out of your equipment, using our professional accessories:



Guns

17J261	FTx™-E gun, 2-Finger, with RAC X™ 210 tip
17J910	SG3™ gun, 4-Finger, with RAC X™ 515 tip

Filters

Gun Filter (for GX™ FF - FTx™-E Gun)

257129	30 mesh, grey
287032	60 mesh, black
287033	100 mesh, blue
257130	200 mesh, red

Gun Filter (for GX™ 21 - SG3™ Gun)

218131	50 mesh, black
218133	100 mesh, blue
256975	150 mesh, red

Material Filter InstaClean™

257094	40 mesh, inline filter
--------	------------------------

Hoses

214698	3/16" x 7.5 m (BlueMax™ II)
247340	1/4" x 15 m (Duraflex™)

Tips & Guards

FFAXXX	Green RAC X™ fine finish tip
PAAXXX	Blue RAC X™ professional airless tip
WA12XX	RAC X™ Wide RAC™, for big surfaces
246215	RAC X™ guard

Other

17J444	Carrying strap
17H170	Hopper, 5.7 litre (GX™ FF only)
253574	Pump Armor™, 1 litre, cleaning fluid



ProXChange™ Pump Kit - Blister Pack

24Y472	Blister pack, fits all GX units
--------	---------------------------------

JetRoller™ System

with Inline™ Gun

24V490	Roller 18 cm
24V491	Roller 25 cm

without Inline™ Gun

24V492	Roller 18 cm
24V493	Roller 25 cm

CleanShot™ RAC X™ Pole Gun

287026	90 cm	287027	180 cm
--------	-------	--------	--------

Rollers with InLine™ Gun

6880095	Exterior, 30 cm fixed
098084	Exterior, 90-180 cm telescopic
098085	Exterior, 45-90 cm telescopic
245397	Interior, 50 cm fixed

RAC X™ Tip Extensions

287019	25 cm	287021	50 cm
287020	40 cm	287022	75 cm
232123	1 m Heavy Duty extension		

Whips (230 bar)

238358	3/16" x 0.9 m
238359	3/16" x 1.8 m
238959	3/16" x 1.4 m

ProGuard™ +

24W090	230 V, CEE 7/7, shuko
24W755	230 V, IEC320, multicord

All written and visual data contained in this document are based on the latest product information available at the time of publication. Graco reserves the right to make changes at any time without notice.

Graco is certified ISO 9001.

GRACO BVBA Industrieterrein Oude Bunders • Slakweidestraat 31 • B-3630 Maasmechelen
Tel: +32 (89) 770 700 • Fax: +32 (89) 770 777 • <http://www.graco.com>

©2016 Graco BVBA 300735ENEU (rev.B) 03/16 Printed in Europe.

All other brand names or marks are used for identification purposes and are trademarks of their respective owners.

