

# UELZENER

---

**Mixing and conveying unit for refractory material  
for the processing of charges up to 400 kg**

## **ESTROMAT 264 E-ST**



### **Description:**

The ESTROMAT 264ST is specifically designed for the processing of refractor materials such as LC- and ULC masses with low water demand. The machine intensively mixes the material with its compulsory mixer build-in the pressure vessel with 4 wear resistant mixing blades and transports the material by means of compressed air to the build-in place.

Crane eyes and forklift bags facilitate the transport of the machine to its final location and guarantee a fast installation.



# ESTROMAT 264 E-ST

## The ESTROMAT 264ST is consisting of the following modules:

- Machine base frame
- Pressure sealed lockable mixing vessel
- Mixing shaft with drive motor, gear box and material outlet
- Air armature
- Water dosing armature
- Electric control box
- Flexible conveying hoses (none-standard delivery)

The mixing vessel with build-in mixing shaft and drive is installed on the rugged machine skid rack. The low charging height of the mixing vessels allows an optimal control of charging and mixing. The drive of the mixing shaft is effected by a powerful rotary current motor and a heavy duty gear box.

With an eccentric lever the mixing vessel is locked pressure sealed by a cover. When the vent valve has been closed the main air valve can be opened. At the middle position of the two valves for vessel air and accelerator air, the stopper-type-conveying will start and transport the charge of mixed material within 2 – 3 minutes through the conveying hose to the processing location.

## Technical data

Mixing vessel volume:	260 l
Mixing vessel useful volume:	200 l
Power of the mixer motor:	11 kW
Tension :	400V / 50Hz / three phase
Power supply:	CEE 532 / 6h
Fuse:	30 A idle
Protection type:	IP 54
Necessary compressed air connection:	min. 6 bars / min. 4 m <sup>3</sup> / min
Maximum vessel pressure:	8 bars
Material outlet (standard):	ID 65
Conveying performance:	max. 3m <sup>3</sup> /h

\*) depending on material, compressed air connection and conveying hose

## Dimensions and weight

Total Length:	2310mm
Total width:	780mm
Charging height of mixing vessel:	950mm
Transport height:	1250mm
Weight:	800kg approx.

## Additional (optional) equipment

- Automatic grease unit
- Blow-back device
- Re-mixer ERSTOMAT 402 NM

# ESTROMAT 264 E-ST

---



The job site is clearly arranged. The armatures of the blow-back device are easy to reach.

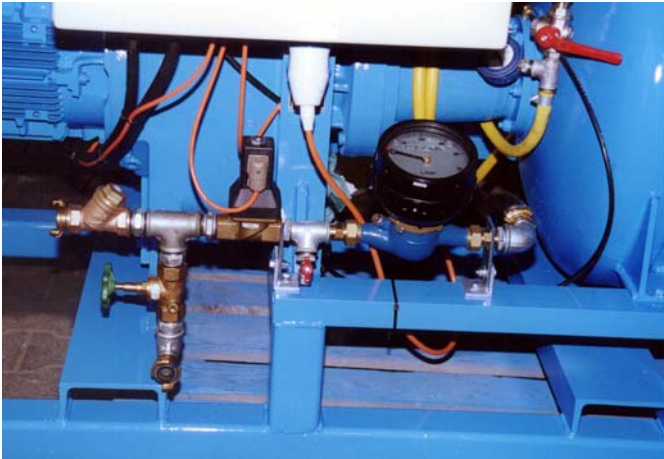
The blow-back device installed between vessel outlet and conveying hose is preventing unmixed material from getting unintentional and uncontrolled into the conveying hose and also avoid blockades at the vessel outlet. The blow-back device essentially consists of a pneumatically lockable valve and the necessary air armatures for operation.



The blow-back device is preventing blockages in the conveying hose



# ESTROMAT 264 E-ST



The adjustable water dosing gauge provides the correct ratio and the magnet-valve for the automatic shut-off after the flow of pre-set quantity of water for the mixing process.



The air armature comprises a main air ball-valve as well as a ball-valve for the vessel air and transport air.



All electric command and information panels are installed in a dust proof steel box.



Autom. grease device



View from motor side



View from charging side