

UELZENER

MASCHINEN GMBH



ESTROMAT 403

**The continuous mixer
for maximum capacity**



UELZENER MASCHINEN GmbH

Stahlstrasse 26-28

D-65428 Rüsselsheim / Germany

Tel. +49-(0)6142-17768-0

Fax +49-(0)6142-17768-50

e-mail: contact@uelzener-ums.de

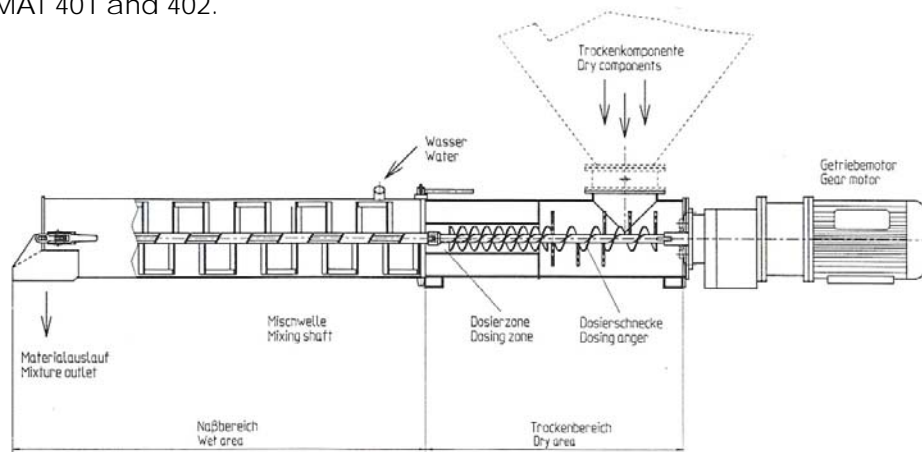
Internet: www.uelzener-ums.de

ESTROMAT 403

UELZENER continuous mixer types ESTROMAT 400 are approved for years especially with brick mortar. UELZENER developed with the type ESTROMAT 403 another type of these successful mixers, which is covering the upper range of mixing capacity. There are three versions available with outputs from 5 up to 20 m³/h.

The range of application of the ESTROMAT is wide spread, e.g. for mixing and moistening concrete for wet and dry shotcreting processes, mixing special construction materials, insulation materials, suspensions, refractory masses, masonry mortar, fill material, etc. up to a grain size of 20 mm, for building construction, civil engineering, in foundries, mining, special applications in the chemical industry and many more.

The ESTROMAT 403 can be fed with dry material using all systems and equipment available on the market, such as silos and containers, with material bags, with big bags, from containers with pertinent conveying equipment, like screw conveyers, conveyor belts, and other systems. The design of the single-shaft mixers and the mode of operation of the system is the same as in the types ESTROMAT 401 and 402.

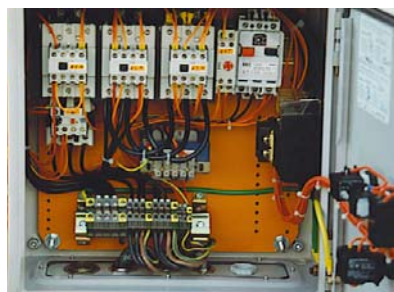


FUNCTION

The dry components to be mixed are loosened up in the spacious dry mortar trough and are then fed by the dosing worm to the following mixing tube in unvaryingly constant amounts. In the mixing tube the exactly adjustable mixing liquid - usually water - is added to the dry components. The rotating mixing shaft mixes the two components into a homogeneous mass of constant consistency and quality and then continuously feeds the mix to the material outlet at the end of the mixing tube. Depending on purpose and application, the mixed material can be pumped or transported in another manner. The ESTROMAT 403 is compatible with other products from UELZENER.

The water dosing armature, consisting mainly of pressure reducing valve, magnetic valve, metering valve and flow-meter, provides for continuous flow of water for the mixing process and adaption to the working process.

The ESTROMAT 403 is equipped with an electric control box, which drives all functions of the continuous mixer. The easily understandable arrangement of command switches and control-lights allows easy and functional operation. The electric control-box is designed according to the VDI-regulations. Other national regulations for the export business are available. The electric control box consists of heavy duty components and guarantees working without breaks.



ESTROMAT 403

Technical Data: Continuous Mixer ESTROMAT 403				
	ESTROMAT 403-1	ESTROMAT 403-2	ESTROMAT 403-3	ESTROMAT 403-4
Item no.	403.00.001	403.00.002	403.00.002.02	403.00.003
Motor rating	7,5 kW	11 kW	15 kW	45 kW
Voltage ***	400V / 50Hz	400V / 50Hz	400V / 50Hz	400V / 50Hz
Protective system***	IP 54	IP 54	IP 54	IP 54
Mixing output *	5 - 10 m ³ /h	10 - 15 m ³ /h	10 - 20 m ³ /h	10 - 25 m ³ /h
Mixing speed	250 min ⁻¹	250 min ⁻¹	250 min ⁻¹	250 min ⁻¹
max. aggregate size	6 mm	12 mm	16 mm	20 mm
Silo flange **	250 (350) mm	250 (350) mm	250 (350) mm	250 (350) mm
Rectangular flange	750 x 650 mm	750 x 650 mm	750 x 650 mm	750 x 650 mm
Dimensions with skid frame				
Length	3900 mm	3900 mm		3900 mm
Width	1000 mm	1000 mm	1000 mm	1000 mm
Height	1330 mm	1330 mm	1330 mm	1330 mm
Weight ****	580 kg	720 kg	820 kg	980 kg

All above mentioned technical data are subject to change. The scope of delivery contains the electric control box. Container and skid frame are optional delivery.

* depending on the dosing screw selected and used material

** other dimensions possible depending on demand

*** other voltages and protective systems (UL), (CSA) or (SCH,d) (fireproof) available

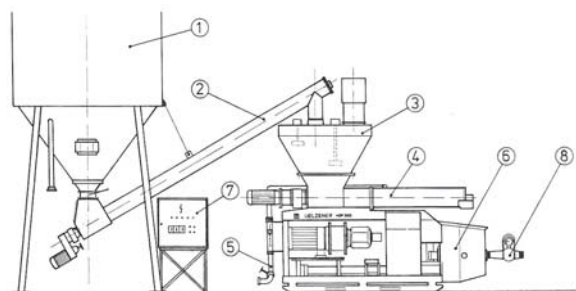
**** without electric box, water armature, machine frame

Accessories: Big-bag hopper 250 l with cutting device, Skid frame for mounting continuous mixer

Example for application: mixing and pumping of residues of power stations

1. Silo for REA-gypsum
2. Incline pipe screw conveyor
3. Feed hopper with min-max level probe
4. Continuous mixer ESTROMAT 403
5. Water supply
6. Thick-matter pump UELZENER HDP3000
7. Electrical main control box
8. Pipeline for material transport

The application system showed below is suitable for mixing and conveying of dry pre-mixed materials up to a grain size of 16 mm. This system is also be used for pressure grouting for underground cavities, which processes a mix of cement, fly-ash or electrical dust collector ashes.



ESTROMAT 403 with big-bag feed hopper, skid frame and stationary high pressure double-piston pump UELZENER HDP3000.

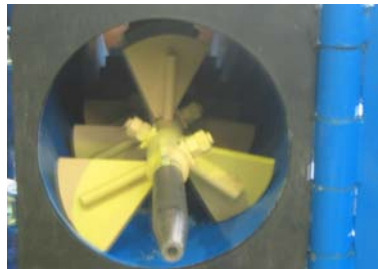
ESTROMAT 403



ESTROMAT 403 application for mixing powder residuals from sand classification unit



View to mixing shaft with removable paddles (special application)



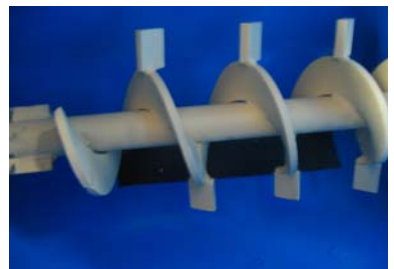
View to the mixing shaft inside the mixing chamber, when mixing chamber is swung out



View to mixer material outlet with tube reduction



Different gear motors with a power of 7,5 up to 45kW can be delivered for special applications according to the material to be mixed.



The dosage shaft can be equipped with additional small paddles to pre-mix the dry material in the feeding hopper of the continuous mixer.

Continuous mixer ESTROMAT 403 with explosion proof gear motor for application in chemical industry

Mixing shafts and dosing shaft can be delivered in different qualities according to the abrasives of the mixed material, e.g. cement concrete, quartz sand, refractory materials, fly ash, and so on.

For application in the chemical industry mixing shafts, dosing shafts, as well as the mixing chamber can be delivered in stainless steel qualities.

Different output of the continuous mixer ESTROMAT 403 can be achieved by changing the diameter and the lead of the dosing shaft as well by changing the standard speed of the gear motor or by using a frequency converter.

